



Thank you to all sponsors, buyers, participants and attendees of the 26th Annual Governor's Charity Steer Show



GRAND CHAMPION STEER

"O'Malley," shown by Bill Northey, Iowa Secretary of Agriculture, was selected as Grand Champion Steer. The Floyd County Cattlemen and Friends of Floyd County sponsored Northey's steer. The Floyd County Coalition purchased the steer at auction for \$9,000. Josh Becker of Charles City owned the steer.



GOVERNOR'S STEER

Governor Culver's steer, "Head of Steak," was sponsored by the Iowa Beef Industry Council and the Iowa Cattlemen's Association and was raised by Haleigh Batterson of Pilot Mound.



PEOPLE'S CHOICE AWARD

Wayne Wierson, A.B.A.T.E. Share the Road Coordinator, was selected by the crowd for the title of "People's Choice." Wierson's steer, "Tabasco," was sponsored by A.B.A.T.E. of Iowa and purchased by OSI Industries and Data Power Technologies for \$3,000. Josh Vander Molen of Sully raised the steer.



SHOWMANSHIP AWARD

Rachel Burton, Miss Teen Rodeo Iowa, earned the Showmanship Award. Burton's steer, "O'Malley," was sponsored by the Northwest Iowa Cattlemen's Associations and was purchased by Cookies Food Products and West Side State Bank for \$2,500. Adrianna Junck of Sioux City raised the steer.

2008 SPONSORS

Iowa Beef Industry Council & Iowa Cattlemen's Association
West Glen

NW Iowa Cattlemen's Associations

Cherokee, Crawford, Lyon, Monona, Plymouth, Sac, Sioux and Woodbury

Davis County Beef Promoters

Bloomfield Livestock Market, Bloomfield Family Ford, Davis County Success Bank, Troy Elevator, Keigh's Foods, Swaim Farms, American Welding & Tank, Farm Bureau, Kincart Physical Therapy, Lynch Law Office, Dave Hopkins, Crop Service, Hoskin's Elevator, North Side Insurance, Davis County Hospital, Lough Crop Insurance, Davis County Tire, Overstreet - Pioneer, Fetcho Chiropractic, Titan Soil, Mike's Inc., Darin Westoff, Rancho Centinela

Prairie Meadows Race Track & Casino

SE Iowa Caring Cattlemen

Wapello County Cattlemen, Greiner Implement, Quality Ag Service, Keoco Livestock Auction, Richland Vet Clinic, Auto Glas Center, Jefferson County Implement, Smith Feed & Grain, Troy Elevator, Quick Shop

Southern Iowa Merchants

Garland - Van Arkel - Langkamp Funeral Chapel, Keoco Auction Company, McGriff's of New Sharon, Bates Funeral Chapel, H&S Feed & Country Store, Gattion Realty Inc., Ideal Ready Mix, Harden Funeral Home of New Sharon, Klyn's Tire Service, Farm Credit Services of America, Hawkeye Farm Management & Real Estate, Midwest One Bank

Iowa Farm Bureau Federation

Des Moines Area Community College

Volunteer Boards of Iowa Ronald McDonald Houses

McDonald's of Central Iowa

McDonald's of Eastern Iowa

McDonald's of NW Iowa & Dr. Pepper

Iowa Banker's Association

A.B.A.T.E. of Iowa

Vander Molen Friends & Supporters EBY Trailers, Big River Resource, Synergy,

Rocking S Trailers, Goalsetter Systems, Harthoorn Seed, Kruseman Implement, Vermeer Manufacturing, Ulrich Motor Company, Sully Transport

Benton County Cattlemen/Koopman Hay & Forage - Dennis & LuElla & Local Support

Interstate Grain, Lillibridge Trucking, Jim and Gina Krug, Waterloo Implement, Kaiser Ag, US Bank - Vinton, Randy Steffan Trucking, Ron-Da-Voo, Paul & Jodie Bierschen & Family, Ron Buch, Eden Mutual Insurance, Newhall Locker, Security Bank, Duane Johnson, Bob Hanson, Bryon & Kelly Geater, Bank of Iowa - Independence & Norway, Blairstown Community Supporters, Rich Red Angus

Floyd County Cattlemen & Friends of Floyd County Vera Sun of Charles City,

Land O' Lakes Feed, Sam Soifer, Quality Liquid Feeds, Dight Trucking, M&B Cattle Co., Special Medical Services, Cambrex, Feller and Associates, Slinger Chiropractic, Merle & Merna Schrage, Kyle & Mary Rice and Dean Grober

Midwest Seed Genetics

Sparling Recycling and Crop Production Services, Dekels Steakhouse, Douds

Stone, Henderson Auto Works, Wapello County Sand, Jim Robertson, D&T Express and J.B. Marlins Welding and Tires

Poweshiek and Jasper County Beef Supporters Searsboro Telephone Company,

Indian Hills Community College, Iowa Telecom, Dave Kaisand Family, Theisen's, Casey's, Kent Feeds, SCE, Grinnell Vet Clinic, Ozinga Feed, Cheryl & Storm Seymour Family, Kruseman Implement, Heishman Ag, Medicap, Schmidt Lumber, Northside Vet Clinic, American Family Insurance, Community 1st Credit Union, George/Jacklyn Shenold

Amazing Energy and Local Support Midwest Seed Genetics, Horizon

Equipment, Denison Livestock, Sullivan Supply, Hoffman Agency, Norman Klinker Family, Twin Valley Vet, Bonsali TV and Appliance, Adams Motors Division, Pryor Show Cattle, RAM Trucking, Bey & Barney Murphy, Doral Feedlots - Alex Doral, Cogdill Farm Supply, Rickey Show Cattle, Crawford County Corral - Colby Meseck, Denison Augo - Russell Maack, Crawford County Cattlemen, Jepsen Show Cattle

Bloomfield Livestock and Van Buren County Support Libertyville Savings Bank,

UAP - Jerry Partridge, Coley Cattle Company, A&K Feeds-Kriss & Ann Skaggs, Fordyce Cattle Co., Dale & Kim Hornberg

Guthrie County State Bank

2008 CELEBRITIES

Governor Chet Culver

Karen Hallagin, West Glen,

Chief Operating Officer

Rachel Burton, Miss Teen Rodeo Iowa

Katie Piper, KCCI TV 8

Derron Heldt, Director of Racing,

Prairie Meadows Race Track & Casino

Kevin Carstensen, Iowa Cattlemen's

Association President

Stan Clement, CEO, Iowa Speedway

Shawn Sperflage

Rob Denson, President, DMACC

Emily Lambert, Forbes Magazine

Kristie VerMum, KTIV TV

Aleigh Beahm, Ms. Rodeo Iowa

Dr. Maynard Hogberg, ISU Chair of

Animal Sciences

Mark Pearson, WHO Radio - The Big Show

Wayne Wierson, A.B.A.T.E.

Share the Road Coordinator

Jordan Benson, Miss Iowa Speedway

Bill Northey, Iowa Secretary of Agriculture

Edwin Brand, KMG0 Radio

Jeriann Ritter, WHO TV 13

Mitch Beeler, Iowa National Guard soldier

Ken Root, WHO Radio - The Big Show

Lieutenant Governor Patty Judge

Marshall Ruble, Iowa State University

Beef Teaching Farm

Metinka Slater, KCCI TV 8

2008 STEER OWNERS

Haleigh Batterson,
Pilot Mound

Andrea Nelson, Mitchellville

Adrianna Junck, Sioux City

Bradly Bish, Bloomfield

Jessica Sutton, Slater

Lane Judy, Fremont

Nolan Ferguson, New Sharon

Tori Tucker, Grand Junction

Trey Schneider, Lacona

Lucas Bravard, Jefferson

Melissa Kroksh, Akron

Alyssa Johnson, Eagle Grove

Kris Alleman, Slater

James McCain, Malcom

Josh Vander Molen, Sully

Jordan Vander Molen, Sully

Josh Becker, Charles City

Mike Piicher, Blakesburg

Brittany Baker, Grinnell

Brandon Reck, Blakesburg

Chris Rich, Vinton

Kysa Roberts, Charter Oak

Makenzie Zeitler, Douds

Madisyn Jorgensen,
Guthrie Center

2008 BUYERS

Prairie Meadows Race Track & Casino

Friends of West Glen

Cookies Food Products and West Side State Bank

Cookies Food Products and West Side State Bank

Prairie Meadows Race Track & Casino

McDonald's of Des Moines Dick and Pat Mathson

McDonald's Restaurants Iowa City and Williamsburg

Iowa Farm Bureau Federation, District 5

James Oil Company and James Simmental Farm

McDonald's Franchise Owners

Jim & Karen Baker, Christian & Gaby Eckstein

East Balt Bakery

Curran Cattle Company

Keokuk County Implement Co., Jim & Peg Eversmeyer,

Clarahan Hog Buying, Clarahan Farms, Dennis &

Sheryl Clarahan

Agriprocessors of Postville

OSI Industries & Data Power Technology

McDonald's Restaurants Iowa City and Williamsburg

Floyd County Coalition

Curran Cattle Company

Tama Livestock Auction

James Oil Company and James Simmental Farm

Benton County Cattlemen and Local Support

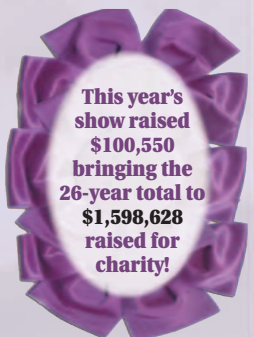
Amazing Energy

BSA Auto Sales, Inc.

Kovar Bros. Chopping, Kovar Farms, Niemeyer Electric

Contribution from DMACC

The 26th Annual Governor's Charity Steer Show was hosted by Governor Chet Culver & sponsored by the Iowa Beef Industry Council and the Iowa Cattlemen's Assoc.



This year's show raised \$100,550 bringing the 26-year total to \$1,598,628 raised for charity!